

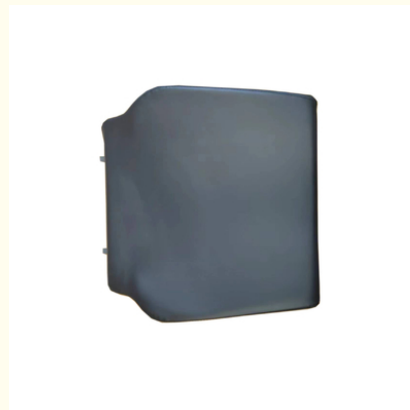


Construction Machinery Parts Seat Cushion With Metal Base Seat Accessories

Our Product Introduction

Basic Information

- Place of Origin: Shaanxi China, Shaanxi China
- Brand Name: Botai
- Certification: ISO9001
- Model Number: BT-ZD02
- Minimum Order Quantity: 10Pcs
- Price: \$34-\$47/Pc
- Packaging Details: Cartons
- Delivery Time: 10-15days
- Payment Terms: T/T
- Supply Ability: 1000Pcs Per Week



Product Specification

- Name: Construction Machinery Parts Seat Cushion With Metal Base Seat Accessories
- Product Model: BT-ZD02
- Material: One-time Molding Sponge
- Size: T110mm*W480mm*L480mm
- Package: Carton
- Thickness: 80mm
- Highlight: **Metal Base Seat Cushion,
Construction Machinery Parts Seat Cushion,
Construction Machinery Seat Cushion**

for more products please visit us on vehicle-seats.com

Product Description

Construction Machinery Parts Seat Cushion With Metal Base Seat Accessories Details

Product Name	Construction Machinery Parts Seat Cushion With Metal Base Seat Accessories
Place of Origin	Shaanxi China
Product Model	BT-ZD02
Material	one-time molding sponge
Color	Black/Customized
Package	Carton
Connecting Hole Distance	165mm
Size	T110mm*W480mm*L480mm

Construction Machinery Parts Seat Cushion With Metal Base Seat Accessories Product Details Show



Shaanxi Botai Automobile Accessories Co.,Ltd.



15319910265



41318225@qq.com



vehicle-seats.com

140 meters west of intersection of Sunwu Road and Lane 4, Zhongjie, Weiyang District, Xi 'an, Shaanxi, China